

## DATA SHEET

### Main properties



Hinged lip



Pit model for welding



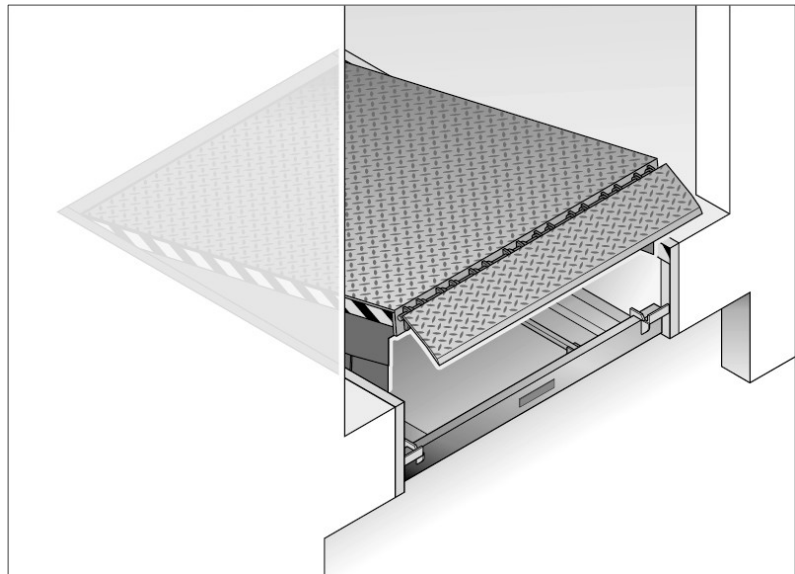
Rated loads up to 180 kN  
acc. to EN 1398



Ordering lengths up to  
5000 mm

## Dock leveller HLS2 pit model P

Hydraulic dock leveller with hinged lip. Self-supporting steel articulated design in accordance with EN 1398.



### Dimensions (mm)

Ordering width	2000, 2100, 2250							
Ordering length	2000	2500	2750	3000	3500	4000	4500	5000
Installation height	595	595	645	645	745	745	745	745
Special sizes on request								

### Work area (mm)

Permissible values up to 12.5% gradient / slope acc. to EN 1398. The maximum height adjustment may deviate.

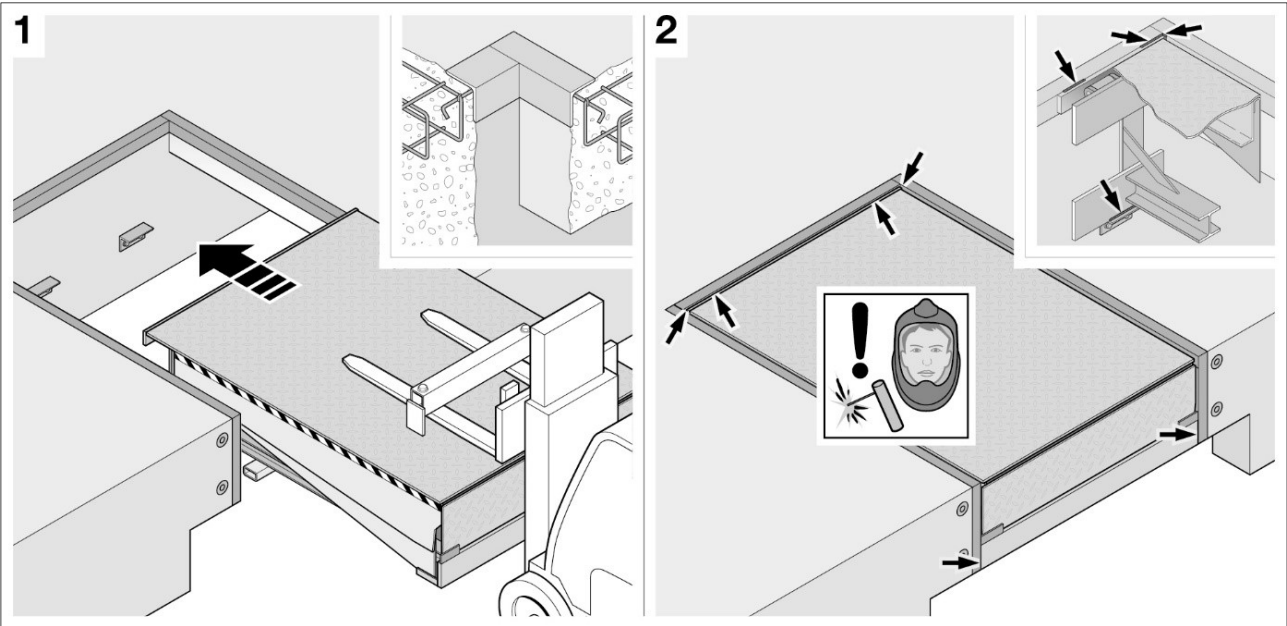
A above level	245	305	335	365	430	490	555	615
B below level	295	285	340	335	385	380	375	370

Design		Standard / option		● / ○
<b>Design</b>	Dock leveller with torsional flexibility, platform with reinforcement profiles at the bottom side, hinged lip with gradient, electrohydraulic system with 2 main cylinders and 1 lip cylinder, self-supporting steel frame, calculation according to the finite elements method			
<b>Safety components acc. to EN 1398</b>	Emergency stop valves, emergency stop switch, restart inhibition, maintenance support, foot guard plates, yellow / black safety markings			
<b>Rated load acc. to EN 1398</b>	60 kN			●
	90 kN			○
	Higher rated load up to 180 kN on request			○
<b>Note for forklifts with hard rollers</b>	Restriction of total weight of industrial trucks with PU / Vulkollan rollers recommended to prevent lane grooves in the platform: With platform 6/8 mm for reach lift truck max. 3 t, for industrial truck max. 5 t, With platform 8/10 mm for reach lift truck max. 5 t, for industrial truck max. 6 t			
<b>Platform material</b>	Moulded, anti-slip steel (running plate S235)			●
<b>Platform material thickness</b>	6/8 mm			●
	8/10 mm (with rated load > 60 kN as standard)			○
<b>Lip material</b>	Moulded, anti-slip steel (running plate S355)			●
<b>Lip material thickness</b>	12/14 mm with rated load 60 kN and hinged lip 405 mm			
	15/17 mm with rated load 90 kN or hinged lip 500 mm			
<b>Lip length</b>	405 mm, with rated load > 60 kN shorter			●
	500 mm (rated load max. 60 kN)			○
<b>Lip shape</b>		Ordering width (mm)	≤ 2000	> 2000
Type R	Straight		●	○
Type S	100 mm chamfering on each side		○	●
Type SG	Segmented (rated load max. 60 kN), Segments approx. 145 mm wide, load bearing capacity up to 600 kg each		○	○
<b>Gap sealing</b>	Sealing lip, all-round on 3 sides			○
<b>Insulation</b>	30 mm thick insulating layer under the platform			○
Surfaces		Standard / option		● / ○
<b>Coating</b>	Steel surfaces sand-blasted, coated with 2-component PUR paint, 60 to 80 µm			●
	Steel surfaces sand-blasted, galvanized			○
<b>Paint colour</b>	Traffic black, based on RAL 9017			●
	RAL to choose, except for metallic and signal colours			○
<b>Anti-slip coating</b>	Running plate coated with polyurethane with injected Twaron fibres, approx. 1 – 2 mm thick on the platform and lip, anti-slip class R11 acc. to DIN 51130			○
<b>Acoustic insulation</b>	Running plate coated with polyurethane with injected Twaron fibres, approx. 3 – 4 mm thick on the platform and approx. 1 – 2 mm thick on the lip, anti-slip class R11 acc. to DIN 51130			○

Operator and control		Standard / option	● / ○
<b>Hydraulics temperature range</b>	Suitable for temperatures from -10 to +50°C under the dock leveller		●
	Suitable for temperatures from -25 to +50°C under the dock leveller		○
<b>Drip pan for oil</b>	Drip pan for hydraulic oil, retractable		○
<b>Motor power</b>	0.75 kW to 1.1 kW (with rated load up to 90 kN)		●
<b>Connecting voltage</b>	400 V / 3-phase		●
	230 V / 3-phase		○
	230 V / 1-phase		○
	Additional connecting voltages on request		○
<b>Supply frequency</b>	Either 50 or 60 Hz		●
<b>Operator protection category</b>	IP 54		●
<b>Control protection category</b>	IP 65 (jet-water protected)		●
<b>Control elements</b>	Membrane push buttons integrated in housing for press-and-hold actuation and an "Auto" button for automatic return to the home position		●
<b>Control type</b>	420 S Basic control		●
	420 Si Combination control with integrated door operation		○
	460 S Multi-control with extended functions and connections		○

Control equipment		420 S	420 Si	460 S
Standby / error message display	LED operation indicator	●	●	
	7-segment display			●
Operation	Automatic impulse return	●	●	●
	Integrated control button for dock shelter			●
	Integrated door operation		●	
Prepared connections and functions	Wheel chock with sensor	●	●	●
	Dock leveller release function	●	●	●
	Door release function	○	○	●
	Door with automatic operator closing function			○
	Semi-operation			○
	Expanded connection options			●
Energy efficiency	Energy saving mode	●	●	●

<b>Fitting</b>	
<b>Fitting model</b>	Pit model P
<b>Fitting</b>	Fitting by welding in a pit prepared according to the manufacturer's instructions, or in a steel pedestal, with cut-outs on reverse face for an exact welding seam
<b>Protective film</b>	Platform optionally provided with protective film, as standard when equipped with anti-slip coating or acoustic insulation



Fitting situation pit model P

The information above, in particular the specifications and illustrations, are not binding and do not constitute an agreement on quality or a guarantee. Changes and errors are expressly reserved. The data sheet is subject to copyright. No part may be reproduced without our prior permission.